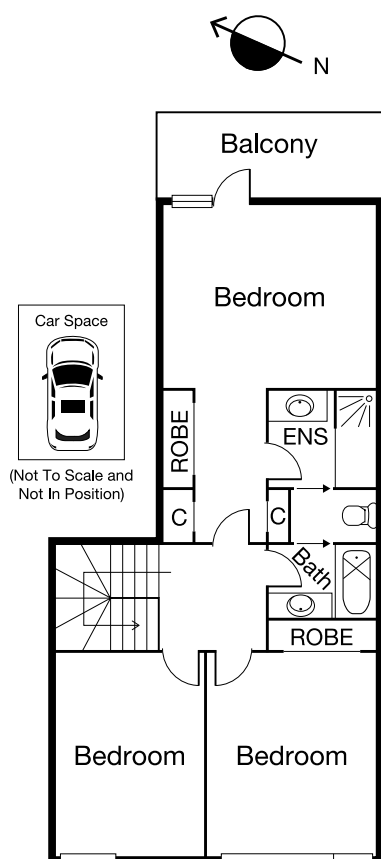


SOUTH MELBOURNE 95A Eastern Road

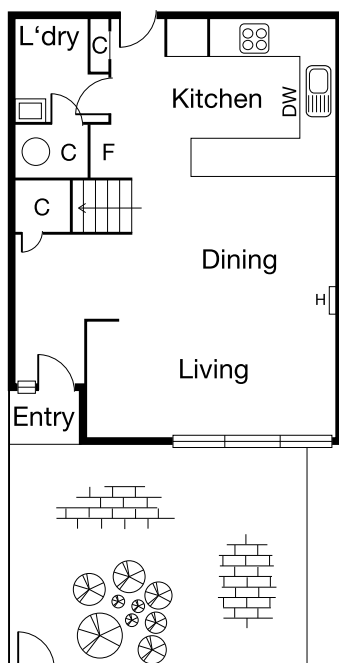


CAYZER

SOUTH MELBOURNE 95A Eastern Road



First Floor



Ground Floor

PARK-SIDE LIVING

- Undercover car space
- Ideally positioned within the block
- Minutes' walk to Clarendon Street, Albert Park Lake, Botanical Gardens and public transport

Delightful aspects over the leafy greenery of Eastern Reserve, this well presented three-bedroom residence within the coveted "City-Edge" development comprises: Functional kitchen overlooking spacious living/dining area plus separate laundry and storage.

Outstanding private courtyard with independent entrance and access to park. Upstairs: Main bedroom with built in robes, ensuite and private terrace. Two further double bedrooms (each with built in robes and parkland views) plus central bathroom.

3 2 1

Auction Saturday 10 August at 12pm

Inspection As advertised or by appointment

Contact Simon Carruthers 0438 811 601
Jason De Stefano 0413 292 666

Mel Ref 57 H1



Interactive Floorplan

CAYZER

Albert Park 330 Montague Street 03 9699 5999
Port Melbourne 370 Bay Street 03 9646 0812

cayzer.com.au

Every care has been taken to ensure the information contained in this document is accurate. The diagrams/plans are a representation only and are not to scale. Interested parties should seek independent legal advice. Cayzer Real Estate Pty Ltd does not accept any responsibility or liability as a result of the information provided in this document. If your property is currently listed for sale with another agent, please disregard this notice. | Cayzer Real Estate Pty Ltd | CRE20501-047 170719